



Utilizzo
Use
Utilización

Herbicides



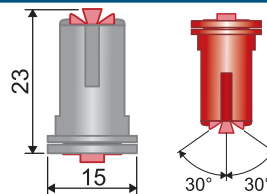
Fungicides



Insecticides



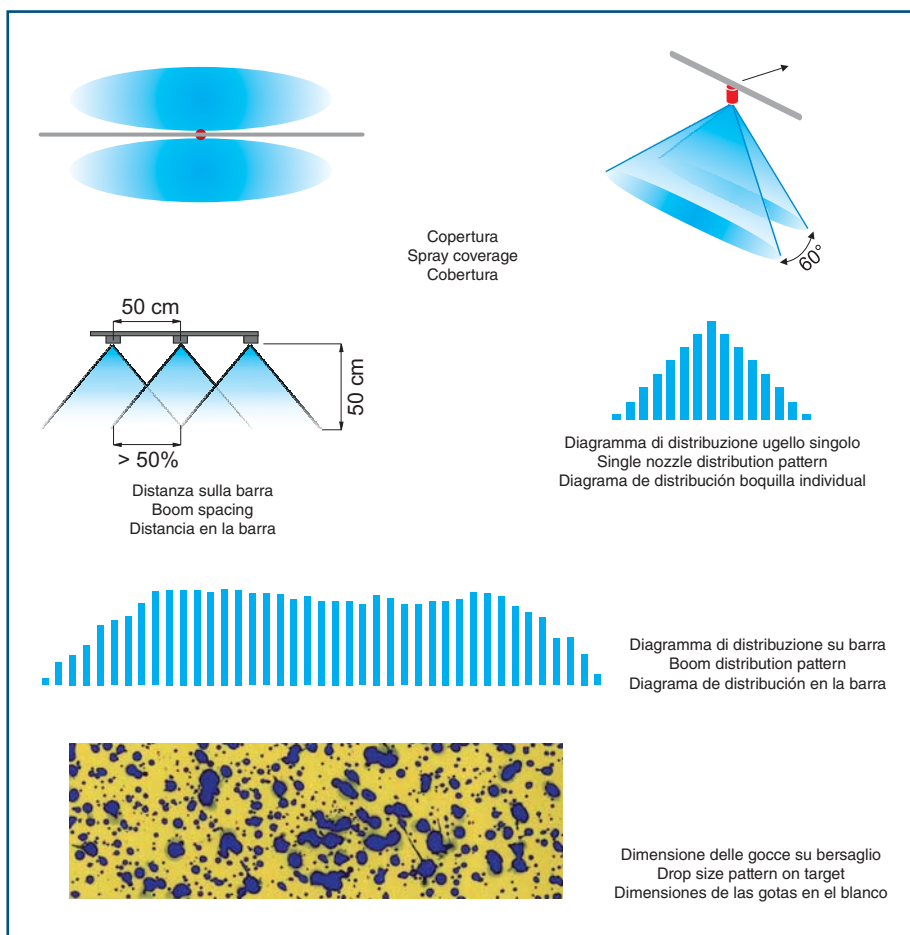
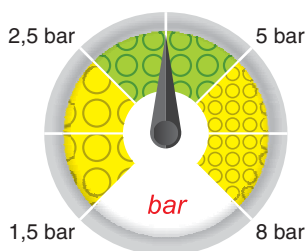
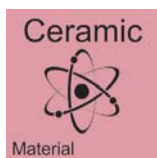
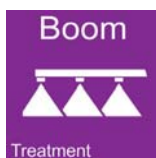
Dimensioni (mm)
Size (mm)
Dimensiones (mm)







- Adatto per trattamenti con erbicidi, fungicidi ed insetticidi: efficace su barre per trattamenti di ortaggi e cereali.
- L'inclinazione del getto permette una migliore penetrazione e deposito del prodotto sulla vegetazione, operando in modo eccellente sulla zona interessata.
- L'azione combinata di iniezione d'aria/doppio ventaglio permette un'elevata riduzione della deriva pur mantenendo una buona copertura.
- Il corpo esterno compatto (23 mm di altezza) in Delrin®, unito all'inserto in ceramica ASJ conferisce eccezionali caratteristiche di durata.
- Doppia presa d'aria di grandi dimensioni con profilo anti-intasamento.
- Completamente smontabile per una facile manutenzione.
- Riduzione della deriva fino ad un massimo del 90%.

- Suitable for spraying herbicides, fungicides and pesticides with booms on vegetables and cereals.
- Spraying angle ensures improved penetration and deposit of the product on vegetation, thereby efficiently working on the sprayed area.
- The combined action of air injection and twin fan allows a considerable decrease of drift, yet ensuring a good coverage.
- The compact external body (23 mm high) in Delrin® and the ASJ ceramic insert ensure exceptional long life.
- Large double air inlet with anti-clogging profile.
- They can be fully removed for easier service.
- Drift reduction up to a maximum of 90%.

- Adecuado para tratamientos con herbicidas, fungicidas e insecticidas: eficiente para tratamientos con barras en hortalizas y cereales.
- La inclinación del chorro permite una mejor penetración y depósito del producto en la vegetación, operando de manera excelente en la zona interesada.
- La acción combinada de inyección de aire/doble abanico permite una elevada reducción de la deriva, manteniendo una buena cobertura.
- El cuerpo exterior compacto (23 mm de altura) de Delrin®, junto al inserto de cerámica ASJ, le otorga una excelente durabilidad.
- Doble toma de aire de grandes dimensiones con perfil anti-atascamiento.
- Completamente desmontable para un fácil mantenimiento.
- Reducción de la deriva hasta un máximo de 90%.



COD. CODE CÓD.	 bar	 drop	 l/min	l/ha (spazio tra gli ugelli: 50 cm)									
				l/ha (nozzle spacing: 50 cm)									
				4 km/h	6 km/h	8 km/h	10 km/h	12 km/h	14 km/h	16 km/h	18 km/h	20 km/h	25 km/h
ATC110015	1.5	XC	0.42	127	85	64	51	42	36	32	28	25	20
	3	VC	0.60	180	120	90	72	60	51	45	40	36	29
	4	C	0.69	208	139	104	83	69	59	52	46	42	33
	6	M	0.85	255	170	127	102	85	73	64	57	51	41
	8	F	0.98	294	196	147	118	98	84	73	65	59	47
ATC11002	1.5	UC	0.57	170	113	85	68	57	48	42	38	34	27
	3	VC	0.80	240	160	120	96	80	69	60	53	48	38
	4	VC	0.92	277	185	139	111	92	79	69	62	55	44
	6	C	1.13	339	226	170	136	113	97	85	75	68	54
	8	C	1.31	392	261	196	157	131	112	98	87	78	63
ATC110025	1.5	XC	0.71	212	141	106	85	71	61	53	47	42	34
	3	VC	1.00	300	200	150	120	100	86	75	67	60	48
	4	C	1.15	346	231	173	139	115	99	87	77	69	55
	6	C	1.41	424	283	212	170	141	121	106	94	85	68
	8	C	1.63	490	327	245	196	163	140	122	109	98	78
ATC11003	1.5	XC	0.85	255	170	127	102	85	73	64	57	51	41
	3	VC	1.20	360	240	180	144	120	103	90	80	72	58
	4	C	1.39	416	277	208	166	139	119	104	92	83	67
	6	C	1.70	509	339	255	204	170	145	127	113	102	81
	8	C	1.96	588	392	294	235	196	168	147	131	118	94
ATC11004	1.5	XC	1.13	339	226	170	136	113	97	85	75	68	54
	3	VC	1.60	480	320	240	192	160	137	120	107	96	77
	4	C	1.85	554	370	277	222	185	158	139	123	111	89
	6	C	2.26	679	453	339	272	226	194	170	151	136	109
	8	C	2.61	784	523	392	314	261	224	196	174	157	125
ATC11005	1.5	VC	1.41	424	283	212	170	141	121	106	94	85	68
	3	C	2.00	600	400	300	240	200	171	150	133	120	96
	4	C	2.31	693	462	346	277	231	198	173	154	139	111
	6	M	2.83	849	566	424	339	283	242	212	189	170	136
	8	M	3.27	980	653	490	392	327	280	245	218	196	157
ATC11006	1.5	C	1.70	509	339	255	204	170	145	127	113	102	81
	3	C	2.40	720	480	360	288	240	206	180	160	144	115
	4	C	2.77	831	554	416	333	277	238	208	185	166	133
	6	M	3.39	1.018	679	509	407	339	291	255	226	204	163
	8	M	3.92	1.176	784	588	470	392	336	294	261	235	188

	DIMENSIONE DELLE GOCCE DROP SIZE RATING DIMENSIONES DE LAS GOTAS	
F	Fine-Fine-Fina	136µm ÷ 177µm
M	Media-Medium-Media	177µm ÷ 218µm
C	Grossa-Coarse-Gruesa	218µm ÷ 349µm
VC	Molto grossa-Very coarse-Muy gruesa	349µm ÷ 428µm
XC	Estremamente grossa-Extremely coarse-Extremadamente gruesa	428µm ÷ 622µm
UC	Ultra grossa- Ultra coarse-Ultra gruesa	> 622µm

millesimo di millimetro (Es.: 250µm = 0.25 mm)
µm= thousandth of a millimeter (E.g.: 250µm = 0.25 mm)
milésimo de milímetro (Ej.: 250µm = 0.25 mm)

